



## Stanstead Township

778, Sheldon Road, Canton de Stanstead (Québec) J1X 3W4

☎ 819 876 2948 📠 819 876 7007

[www.cantonstanstead.ca](http://www.cantonstanstead.ca) / [info@cantonstanstead.ca](mailto:info@cantonstanstead.ca)

Opening hours : Monday to Friday 8:00 am to 12:00 pm & 12:30 to 4:00 pm

2 0 1 6 S P R I N G

### IN THIS ISSUE

Invasive plants	2
Need permission to work on banks or shores	2
Land fill	3
Permit	3
Grants	4
Dates to schedule	5
MADA Policy	5
Civil Security	6

## FINANCIAL ASSISTANCE FOR A MAXIMUM OF \$78 000 FOR A RECREATIONAL INFRASTRUCTURE PROJECT

The Deputy of Orford, Pierre Reid, announced, on behalf of Minister of Education, Recreation and Sports, Family Minister and Minister responsible for the region of Gaspésie-Îles-de-la-Madeleine Mr. Sébastien Proulx, financial assistance up to \$ 78 533.08 for the installation of a multifunctional surface at Thayer Park in Stanstead Township. "By supporting such



initiatives, here and in all regions of Quebec, the government helps to provide better conditions for sports and recreational activities for citizens. I am very pleased that we invest in the interests of our citizens, especially our youth," said Mr. Reid, accompanied by the Mayor.

## MEMPHREMAGOG RCM ANNUAL GALA

On February 23<sup>rd</sup>, the Memphremagog RCM held its third annual gala to recognize innovation regarding management of waste and sustainable development. The Municipality of Stanstead Township benefited from this event to present its project to reduce sediment migration to Fitch Brook from the ditches on Noel Road.



Ms. Isabelle Rioux, Environment inspector at the municipality of Stanstead Township and Mrs. Lisette Maillé, president of CCDD of the RCM.

## ORDER FOR SHRUBS

For the sixth consecutive year, the Municipality, in collaboration with the Memphremagog RCM, will provide you with native shrubs recommended for reforestation of riparian strips; easy adaptation and require little care when planting. **(fill in the order form included with this bulletin and send it back before May 13<sup>th</sup>).**

Distribution will be held on Saturday, May 28<sup>th</sup>, 2016 from 9:00 am to 11:30 am.

The Memphremagog Conservation Inc organization will also be on hand for the free distribution of trees.



## Invasive plants: be on the lookout!

Invasive exotic plants cause significant loss of biodiversity in Canada and around the world and may also pose risks to human health. If you see one of these three species on your property, please contact the municipality for advice on how to monitor the progression of these plants.

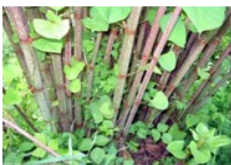


### Giant hogweed

Any contact with this plant can cause itching and burning. Not to be confused with the Cow Parsnip which is a native non-invasive and non-toxic species that resembles the Giant Hogweed.

### Common reed (Phragmites)

This plant is now widespread along the roads and can invade wetlands that are rich in biodiversity. To prevent this from happening, it is important to quickly seed any soil left bare.



### Japanese knotweed

This highly invasive plant has rhizomes that can penetrate the ground more than 2 m deep and extend laterally on 7 m! These underground stems release toxins that prevent the establishment of other plants.

## You draw your water from Lake Lovering or Lake Memphremagog?

Each summer, cyanobacteria (blue-green algae) blooms are detected in these lakes. It may look like broccoli soup, mashed peas or a paint spill (scum). During those activities as swimming, windsurfing, children playing on the waterfront, etc., the skin has a direct contact with the affected water for the one who are more sensitive. These blooms may indicate the presence of toxins, that when ingested or come into contact with skin can cause health problems for humans and pets. So be attentive to the quality of the water around your intake from the lake. For a more secure water source, contact a well specialist to evaluate the possibility of opting for an underground water source.

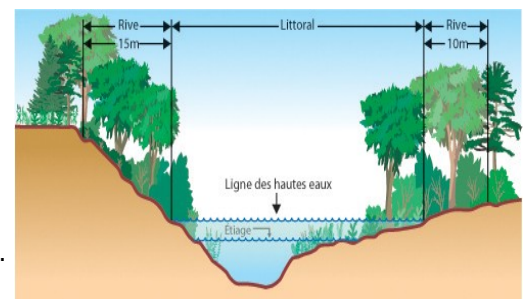


## Need permission to work on banks and shores?

In accordance to the Zoning By-law, the following require a permit:

- Installation of a retaining wall or a rock in a lake or on a bank;
- Repair or installation of a dock
- Work on the bank or shore of a permanent or intermittent water course
- Land fill or excavation, etc.

To find out if your project requires a permit, contact the municipality. There could be a delay to obtain the authorization to carry out your work. Remember to plan your projects ahead of time!



## MISCELLANEOUS INFORMATION

### Healthy Fitch Bay Action Plan



In partnership with the Memphremagog Conservation Inc. (MCI), Stanstead Township has engaged in an action plan to improve the water quality of the bay of Fitch. In 2016, here are some actions that will be performed by Stanstead Township:

- Continue inspection of potentially polluting septic systems.
- Raise awareness with wakeboat type boat users about better navigational practices.
- Visit construction sites to ensure compliance with protective measures against erosion.
- Ensure the compliance of the shoreline by-law.



Visit : [www.memphremagog.org](http://www.memphremagog.org)  
Under section : Healthy Fitch Bay

### Reminder to owners of shoreline properties (lake, stream or wetland)

According to the Zoning By-law, no control of vegetation (grass or tree cutting, etc.) is permitted on the shore for a depth of 5 meters for a slope of less than 30% or 7.5 meters for a slope of more than 30%. Only one access of 5 meters wide (or 1.2 meter for a slope of more than 30%) is excluded from this prohibition. Inspections take place every summer on the territory and non-compliance with these regulations can result in fines.

**New: the restoration of the riparian zones are eligible for tax credits Rénover** (see page 4).



### Temporary shelter

Don't forget to remove your temporary shelter. The installation is allowed from November 1<sup>st</sup> until April 15<sup>th</sup>.

### Land fill

Would you like some soil for your property? We will start cleaning the shoulders of the roads soon and there will be a lot of soil available for citizens who would like to receive some. A permit is required for this so you will need to complete the application and send it to the Municipality. The cost is \$ 15 .

### Boat ramps

Price	Resident	Non-resident
Washing	Free	Free
Ramp	Free	\$15
Parking with trailer	Free	\$15



### Sofa, television, bikes, home appliances in good or bad shape

The garbage collectors will not pick up these items if left on the side of the road. And, aesthetically speaking it's not a pretty sight! All you need to do is call the Ressourcerie des Frontières 1-855-804-1018 to get rid of your large items that will have a second life at no cost to you.

### Pruning

Pruning work will begin soon. This will involve cutting branches which are inside the boundaries of public municipal roads. This work will be done by municipal employees. Please note that the pruning will not be done according to landscaping standards. The purpose is to clear branches from the boundaries of the roads. Should you wish to preserve an aesthetic look to your property, you may cut the branches yourself or hire a professional.

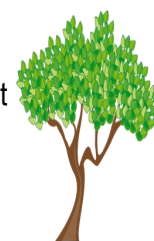
### Permit

Any renovation, construction or repair requires a permit. Please note that there is a possible delay of 30 days to acquire a permit. Check with the building and environment inspectors so that all necessary documents accompany your request.



### Tree cutting permit required

The Municipality reminds you that a permit is necessary to cut ANY tree on the territory. Only trees measuring less than 10 cm in diameter at chest height are excluded from this obligation.





## ATTENTION-ATTENTION-ATTENTION-ATTENTION-ATTENTION

Starting in June, Council meetings will be held **on the first Monday of the month**. The time will remain the same, 7:30 pm. Check public notices. If you have questions, comments or suggestions, feel free to come and express yourself during the question periods. The Mayor is also available to meet you on Fridays. Call the Town Hall for an appointment.



## GRANTS AVAILABLE



### RÉNOCLIMAT PROGRAM

The Rénoclimat program is encouraging homeowners to improve the energy efficiency of their homes through renovations such as insulation, sealing work, installation or replacement of mechanical systems ( ex: fuel heating system).

#### Conditions relating to housing

The dwelling must, among other things, comply with the following characteristics:

**have a maximum of three floors above ground, have a maximum floor area of 600 m<sup>2</sup>, have an intact and complete shell, be built and inhabited for at least 12 months before submitting an application to participate in the program, to be habitable all year round, for residential purposes for more than 50% of the total area of the floor.**

To qualify, work must focus on the building shell (improving insulation and sealing) or ventilation systems, heating or hot water heater. In addition, the renovations must improve the EnerGuide rating for housing by at least 1 point. Consult an advisor before starting your renovations. **Visit the Revenu Québec website for details.**

### TAX CREDIT RÉNOVERT

This refundable tax credit is valid only for the 2016 and 2017 tax years.

Several works are eligible, including:

- Insulation, sealing,
- Installation of doors and windows,
- Heating or air conditioning systems,
- Construction of a septic system (for a permanent residence only),
- Restoration of a shoreline (for a permanent residence only).

The maximum tax credit that can be granted is \$ 10,000 and corresponds to 20% of all eligible expenses that are paid in the year over 2 500 \$.

**Visit the Revenu Québec website for details.**



### NEW PROGRAM FOR SENIORS FOR PAYMENT OF MUNICIPAL TAXES

Assessment rolls started in the mid-2000s, resulting of an increase in property values. Of course, municipal taxes are based on the value of properties and that occasionally caused large tax increases. Some of these residences have been occupied for a long time by retirees whose incomes are fixed and modest, making it difficult to absorb significant increases in taxes. **Visit the Revenu Québec website for details.**

A big thank you to those who participated and those who gave of their time to contribute to the winter festival. We emphasize the huge involvement of the Mrs. Pascale Forand, who managed to organize a very pleasant day for all, despite the weather conditions. Some activities were canceled, others entertained the young and less young such as the launch of the rolling pin and hand-saw contests. Some preferred to stay warm at the Canon Gustin Hall and dance to the music. It is a rendez-vous for next year. Thanks to photographer Mark Linton for this very representative snapshot of the 2016 edition! We see the smiles, despite the gloomy weather!



### Events to come

Organized by Community Association of Georgeville

- Saturday, May 14, 10 am - Nature walk
- Saturday, May 21, 9 am - Spring Spruce up
- Saturday, June 18, 10 am - Annual meeting
- Saturday, July 9, 9 am - Library Book Sale
- Saturday, July 16, 10 am - Kayak Outing
- Saturday, July 23 to July 31, 10 am - Festival des Arts



For more information, visit:  
[www.georgevillecommunity.com](http://www.georgevillecommunity.com)

### Dates to Schedule

The Fête Nationale will be held at Forand Park on Friday, June 24<sup>th</sup>, 2016. Inflatable games, canteen and bar on site and fireworks. **Les Bad Boys** will be playing. Want to volunteer? Call Marco Beauvais (819) 267-8899.



Canada Day in Georgeville on Saturday, July 2, 2016. Annual parade, if you are interested in exhibiting a float, contact Hugh Scott (819) 416-0583. Inflatable games also.

### Official launch - MADA Policy

We are proud to present to you the brochure regarding the policy for seniors and families (included with the bulletin). Our «Age Friendly» municipal initiative led us to write this policy which concerns all citizens of Stanstead Township. Read it and you will understand how the municipality wants to create a favorable place for seniors and families to live. We would like to thank the Ministry of Family and the Minister, Ms. Francine Charbonneau, for their financial support. Thanks also to our steering committee for their great community involvement.

You are all invited to the official launch which will take place **Friday, May 27 at 5:00 pm at the Town Hall**. R.S.V.P. to Hélène 819-876-2948 ext. 228 or [agent@cantonstanstead.ca](mailto:agent@cantonstanstead.ca)



En partenariat avec :



### Congratulations Judy !

Judy Balchelder is the recipient of the Prix Hommage Bénévolat Québec 2016 for her involvement in the community and the region. A native of Magog, she has lived in the Township since the late 60's. Judy is a local unsung hero. From a young age, she volunteered as a patroller on the ski slopes. More recently, she established a network of volunteer drivers for Meals on Wheels. Judy invests much of her time in various tasks within her community. Her involvement in the church is boundless. She is a church elder and member of the board. Mrs. Bachelder is a committed volunteer involved in the Georgeville Community Association and the Historical Society. Regionally she has worked for The Canadian Cancer Society for more than 20 years. We are very pleased to have her with us.

**Bravo and thank you for your dedication!**





**Civil security** is a series of actions and measures put into place **at all levels of society** and every **citizen** should be concerned. It is not just the municipalities who should prepare even if our municipality has an emergency preparedness plan. To help you prepare, here's what your kit should contain:

- **Drinking water** - two litres per person per day for at least three days
- **Non-perishable food** - for at least three days
- **Hand operated can opener**
- **Battery-operated radio** - spare batteries
- **Flashlight** - extra batteries
- **Candles**
- **Lighter and/or matches**
- **First aid kit** –bandages, gauze sterile pads, scissors, tweezers, safety pins, antiseptic, pain medication



**These essentials will help you and your family survive during the first 3 days of an emergency.** This three-day period is the time it could take for help to arrive or for essential services to be re-established.



## Nuisance, Security, Order and Peace

Nuisances such as noise between 9 pm and 7 am, work or other activities that disturb the peace and quiet with noise can be reported to the police. Here is the number to call is **310-4141** .

## Fire Permit



You need a fire permit to make a camp fire. This permit is free and will be valid as long as you own the property. If you plan to make a fire to burn branches to clean up or to clear your land, a permit must be requested each time. It will be valid for a period of 15 days. In every case, always check the index **SOPFEU** .



## Septic tank emptying

If you are an owner affected by septic tank emptying, you will be notified by mail in the weeks prior as to when the contractor will be at your property, so you will have time to remove the covers.



## **Sterilization : the option to abandonment and for a happy pet!**

There is no doubt **that if more of pets are neutered, there will be fewer unwanted, abandoned or neglected animals.** Thousands of kittens or puppies who will not be born are thousands of animals that will not be abandoned or left to fend for themselves as strays.

Sterilizing one's pet is a humane gesture. Sterilization not only helps prevent future suffering of thousands of unwanted animals but also offers optimal living comfort for your pet.

- Reduced risk of ovarian or breast tumors.
- Reduced risk of prostate tumors and absence of testicular tumors.
- Reduction of injuries related to fighting.
- Reduction of unpleasant behaviors (marking, vocalizations, roaming, etc.).
- Increased life expectancy.

**An appropriate environment, adequate resources (water, food, litter ...), social contacts and physical activity is what will make your pet happy!**

## **Toxic foods and plants for your pet**

At the top of the list is **chocolate**, followed by **garlic, onions** and **shallots**, **fresh or dried grapes can**, in turn, lead to acute renal failure, while **nuts, avocados** and **starfruit** can lead to gastric or neurologic problems. Refrain from giving them **bones from pieces of meat**, as several cases of stomach or intestinal obstruction or perforation are reported annually.

Some plants can be poison, such as **yew, rhododendron, lily of the valley, oleander, mistletoe, holly and lilies** (Easter, Oriental and Tiger to name a few) can be fatal; **tulips, daffodils** and **narcissi** have less serious effects, but still are dangerous for your pet's health.

Remember that **antifreeze** is appealing, especially for dogs because of its sweet taste; However, it is highly toxic and can cause death.

If you suspect your pet has ingested something consult your veterinarian immediately.

